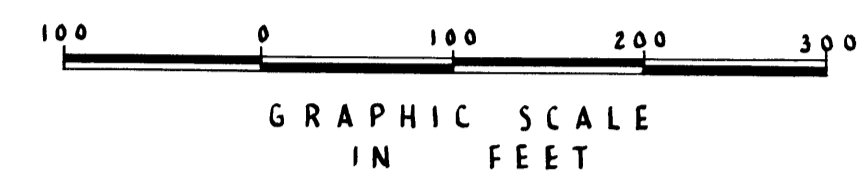


20

Holiday Isle

ON THE GULF OF MEXICO AT DESTIN, INC.
RESIDENTIAL SECTION NO. 3
OKALOOSA COUNTY, FLORIDA

SCALE 1" = 100 FT. MAY 1965



DESCRIPTION

Commencing at the northeast of Lot 5, Block A of Holiday Isle on the Gulf of Mexico at Destin, Inc. Residential Section 1, as recorded in Plat Book No. 2 of Page 4, of the public records of Okaloosa County, Florida; thence S 88° 34' W a distance of 103.0 ft. to a Point of Beginning; thence continue S 88° 34' W a distance of 1300.0 ft. thence S 1° 16' E a distance of 525.0 ft. more or less to the waters of the Gulf of Mexico; thence easterly with said waters of the Gulf of Mexico to a point directly S 1° 16' E of the Point of Beginning; thence N 1° 16' W a distance of 450 ft. more or less to the Point of Beginning.

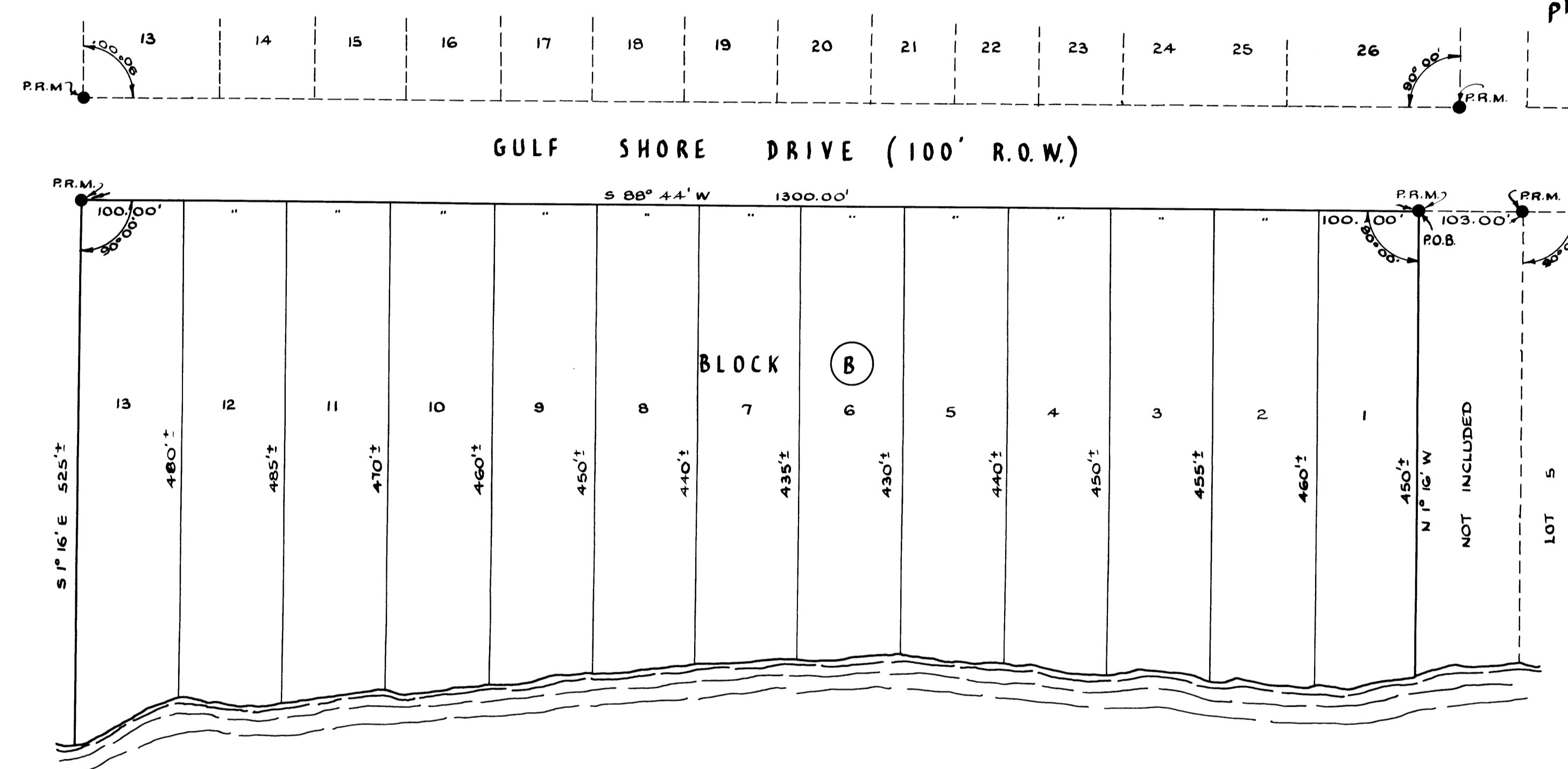
All lying and being in a portion of Okaloosa County, Florida.

RESIDENTIAL SECTION 2

BLOCK (E)

PATTERSON ASSOCIATES INC.
planners engineers

GULF BREEZE, FLORIDA



RESIDENTIAL SECTION 1

BLOCK (A)

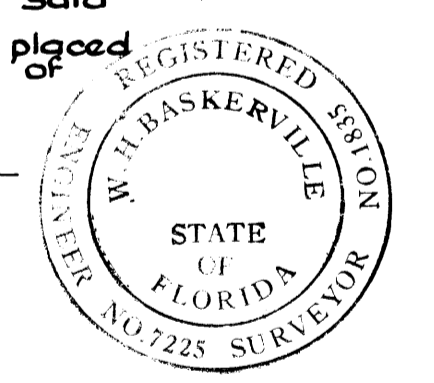
NOTES

- The sign (°) means degrees
- The sign (') means minutes
- Indicates concrete Permanent Reference Monuments
- All lot lines are at 90° to Gulf Shore Drive.

SURVEYOR'S CERTIFICATE

I, William H. Baskerville, do hereby certify that this Plat is a correct representation of the land herein described that said land has been subdivided and staked as indicated and that permanent reference monuments (indicated P.R.M.) have been placed thereon as called for under Section 1, Chapter 10275, Laws of Florida.

W.H. Baskerville
Registered Surveyor No. 1835, Fla.



Subscribed and sworn before me this 12th day of May 1965
James W. Sitten
Notary Public, State of Florida

My commission expires July 3, 1966

COMMISSIONER'S APPROVAL

This certifies that this Plat was presented to the Board of County Commissioners of Okaloosa County, Florida and approved by them for record on the day of 1965.

CLERK'S FILING CERTIFICATE

I, Cecil L. Anchors, Clerk of the Circuit Court, Okaloosa County Florida, do hereby certify that the foregoing plat conforms to the provisions of Section 1, Chapter 10275, Laws of Florida, and was filed in my office on the 2nd day of June 1965 for record and placed in Public Records of Okaloosa County, Florida in Plat Book No. 2 Page No. 20

Cecil L. Anchors
Clerk of the Circuit Court

DEDICATION

STATE OF FLORIDA
COUNTY OF OKALOOSA

We, the Okaloosa Island Authority, the owner of the land shown on this plat, do hereby authorize the same to be recorded in the Public Records of Okaloosa County, Florida and by our execution do authorize the dedication forever the streets shown on this plat to the Public.

Witness our hands and seals this 11th day of June 1965

J.D. Wingard
Chairman
Attest: James E. Miller
Secretary

ACKNOWLEDGEMENT

STATE OF FLORIDA, COUNTY OF OKALOOSA

Before me, the subscriber, this day appeared personally J.D. Wingard and James E. Miller to me well known and acknowledged this plat for the purposes set forth herein.

Given under my hand and seal this the 11th day of June 1965

Doris Jordan
Notary Public, State of Florida

My commission expires: August 5, 1968

Holiday Isle
07-4-20

