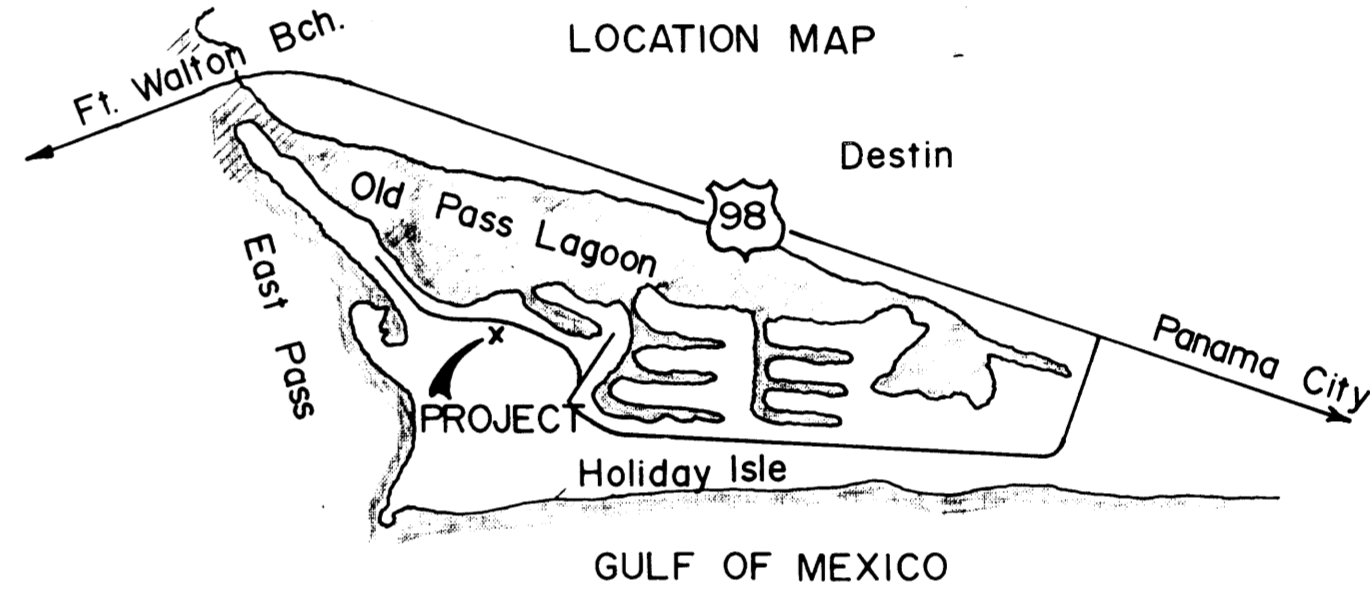
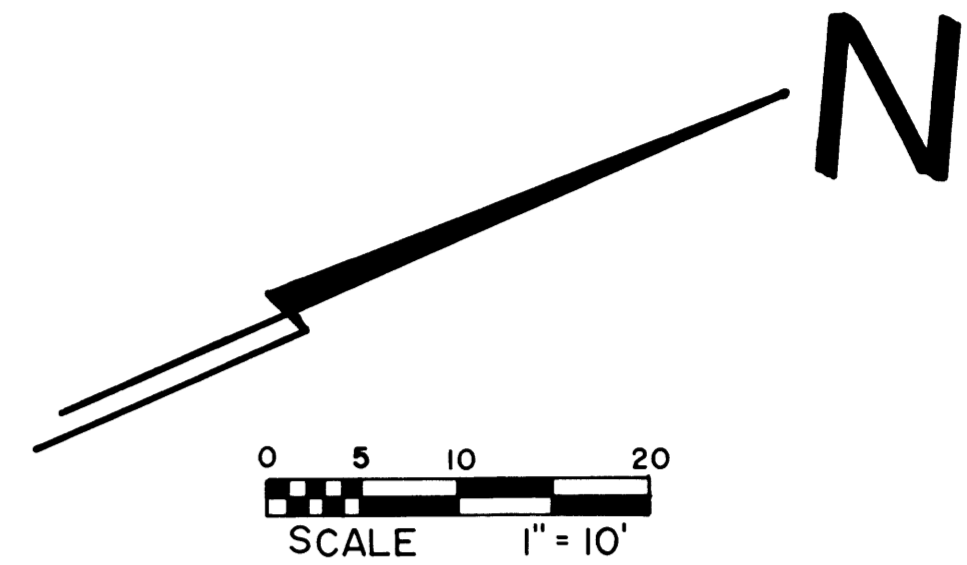
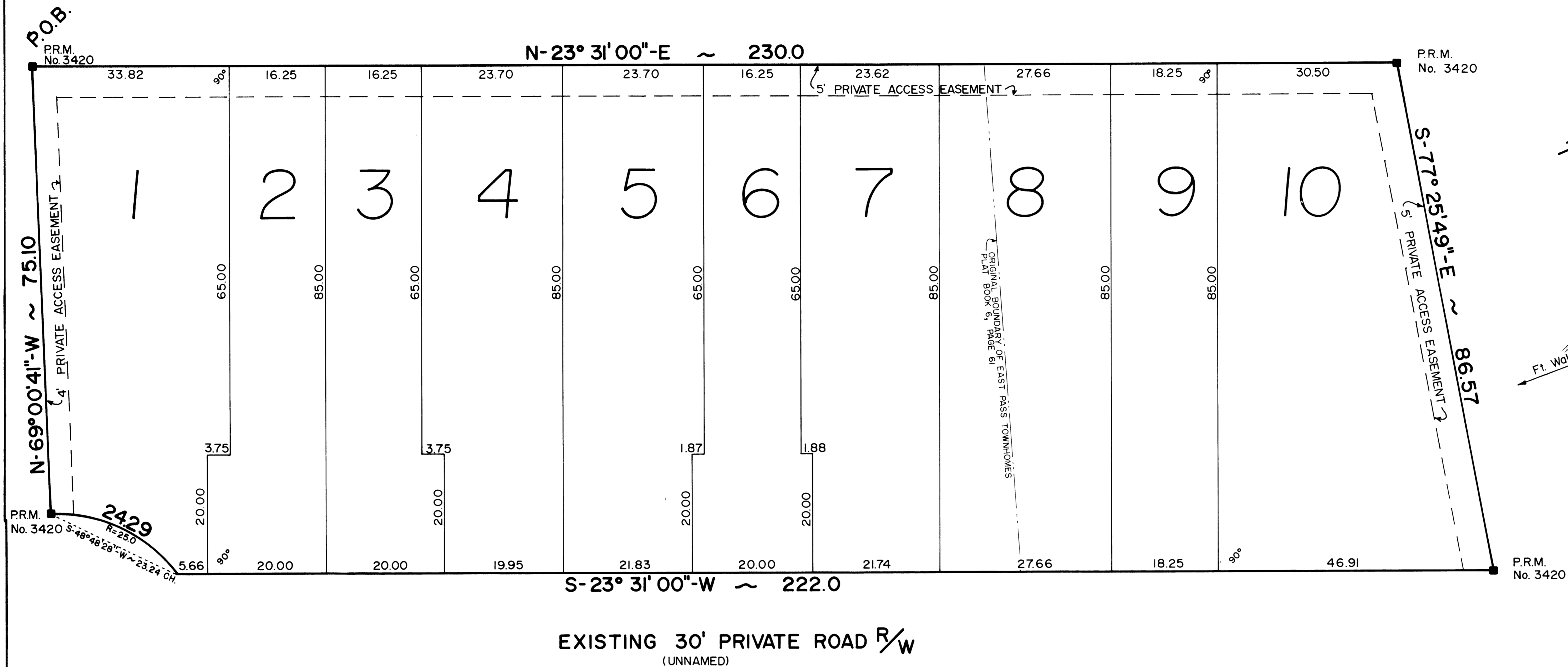


AMENDED PLAT OF EAST PASS TOWNHOMES

BEING A RE-SUBDIVISION OF EAST PASS TOWNHOMES AS RECORDED IN PLAT BOOK 6, PAGE 61, OKALOOSA COUNTY, FLORIDA, AND AN UNRECORDED TRACT ADJACENT TO THE NORTHERN BOUNDARY THEREOF.



Amd. East Pass Townhomes PB 6-72

DESCRIPTION

COMMENCE AT THE NORTHERNMOST CORNER OF LOT 124, BLOCK F, HOLIDAY ISLE, DESTIN, FLORIDA, RESIDENTIAL SECTION NO. 5, THENCE S-30°34'00"-W A DISTANCE OF 724.75 FEET; THENCE N-66°29'00"-W A DISTANCE OF 1077.26 FEET; THENCE S-23°31'00"-W A DISTANCE OF 141.72 FEET; THENCE N-60°26'29"-W A DISTANCE OF 201.12 FEET; THENCE N-23°31'00"-E A DISTANCE OF 80.00 FEET TO THE POINT OF BEGINNING; THENCE CONTINUE N-23°31'00"-E A DISTANCE OF 230.00 FEET; THENCE S-77°25'49"-E A DISTANCE OF 86.57 FEET; THENCE S-23°31'00"-W A DISTANCE OF 222.00 FEET; THENCE WITH A CURVE TO THE LEFT HAVING A RADIUS OF 25.00 FEET FOR A DISTANCE OF 24.29 FEET; THENCE N-69°00'41"-W A DISTANCE OF 75.10 FEET TO THE POINT OF BEGINNING. CONTAINS 0.45 ACRES, MORE OR LESS. SAID TRACT ALSO KNOWN AS EAST PASS TOWNHOMES, PLAT BOOK 6, PAGE 61, OKALOOSA COUNTY, FLORIDA, AND AN UNRECORDED TRACT ADJACENT TO THE NORTHERN BOUNDARY THEREOF.

COUNTY ENGINEERS CERTIFICATE

THIS CERTIFIES THAT THIS PLAT WAS PRESENTED TO THE COUNTY ENGINEER OF OKALOOSA COUNTY, FLORIDA, AND APPROVED BY HIM ON THE 27 DAY OF Sep 1981.

David J. Hennrich
COUNTY ENGINEER

SURVEYORS CERTIFICATE

I HEREBY CERTIFY THAT THIS PLAT IS A TRUE AND CORRECT REPRESENTATION OF THE LANDS SURVEYED, THAT THE SURVEY WAS MADE UNDER MY RESPONSIBLE DIRECTION AND SUPERVISION, THAT PERMANENT REFERENCE MONUMENTS (P.R.M.) HAVE BEEN PLACED AS SHOWN, AND THAT THE SURVEY DATA COMPLIES WITH ALL THE REQUIREMENTS OF CHAPTER 177 OF THE FLORIDA STATUTES.

Edward E. Rice
REG. FLORIDA SURVEYOR NO. 3420

COUNTY COMMISSIONERS APPROVAL

THIS CERTIFIES THAT THIS PLAT WAS PRESENTED TO THE BOARD OF COUNTY COMMISSIONERS OF OKALOOSA COUNTY, FLORIDA, AND APPROVED BY THEM FOR RECORD ON THE 20 DAY OF October, 1981.

Shirley A. ... MEMBER
... MEMBER
... MEMBER
... CHAIRMAN

TITLE OPINION

IT IS THE OPINION OF THE UNDERSIGNED ATTORNEY-AT-LAW, LICENSED IN FLORIDA, THAT TITLE TO LAND DESCRIBED HEREON IS IN THE NAME OF THE ADOPATORS AS SHOWN HEREON AND THAT THERE ARE NO UNSATISFIED MORTGAGES EXCEPT AS SHOWN.

...
ATTORNEY-AT-LAW

PLANNING COMMISSIONS CERTIFICATE

THIS CERTIFIES THAT THIS PLAT WAS PRESENTED TO THE PLANNING COMMISSION OF OKALOOSA COUNTY, FLORIDA AND APPROVED BY THEM ON THE 21 DAY OF Sep 1981.

al mc ...

COUNTY CLERKS CERTIFICATE

I, NEWMAN C. BRACKIN, CLERK OF THE CIRCUIT COURT OF OKALOOSA COUNTY, FLORIDA, CERTIFY THAT THIS PLAT COMPLIES WITH ALL THE REQUIREMENTS OF THE PLAT ACT (CHAPTER 177 OF THE FLORIDA STATUTES) AND THAT SAME WAS FILED FOR RECORD ON THE 23 DAY OF October, 1981, AND FILED IN PLAT BOOK 6 PAGE 72 OF SAID COUNTY.

Newman C. Brackin
CLERK OF THE CIRCUIT COURT
OKALOOSA COUNTY, FLORIDA

ADOPTION

THIS SUBDIVISION, TO BE KNOWN AS AMENDED PLAT OF EAST PASS TOWNHOMES AND AS DESCRIBED HEREIN, HAS BEEN MADE WITH THE FREE CONSENT AND IN ACCORDANCE WITH THE DESIRES OF THE OWNERS, L.M.P. ENTERPRISES, A FLORIDA CORPORATION AND MAX L. SOMERS AND WIFE, KAREN L. SOMERS.

Loy M. Plaster LOY M. PLASTER, PRESIDENT, L.M.P. ENTERPRISES
Jo A. Sheeren JO A. SHEEREN, SECT.-TREAS.
Max L. Somers MAX L. SOMERS, LOY M. PLASTER, ATTY. IN FACT
Loy M. Plaster LOY M. PLASTER, ATTY. IN FACT
Melissa Sharford MELISSA SHARFORD, WITNESS
Anne M. Thomson ANNE M. THOMSON, WITNESS
... WITNESS

ACKNOWLEDGEMENT

STATE OF FLORIDA, COUNTY OF OKALOOSA
BEFORE THE SUBSCRIBER PERSONALLY APPEARED LOY M. PLASTER AS PRESIDENT AND JO A. SHEEREN AS SECT.-TREAS. AND LOY M. PLASTER AS ATTORNEY IN FACT FOR MAX L. & KAREN L. SOMERS, KNOWN TO ME TO BE THE INDIVIDUALS DESCRIBED IN AND WHO EXECUTED THE ADOPTION AND ACKNOWLEDGED THEY EXECUTED THE SAME FOR THE USES AND PURPOSES HEREIN SET FORTH.

Melissa Sharford
NOTARY PUBLIC, STATE OF FLORIDA
MY COMMISSION EXPIRES 8-7-83

MORTGAGEE APPROVAL

THE MORTGAGEES, SMITH & SENNER, HOLIDAY ISLE, A GENERAL PARTNERSHIP AND WHITE SANDS INVESTMENT CORP., A FLORIDA CORPORATION, CONSENTS TO THE PLOTTING OF LANDS EMBRACED IN THIS PLAT AND TO THE ADOPTION SHOWN HEREON.

...
SMITH & SENNER, HOLIDAY ISLE
WHITE SANDS INVESTMENT CO.
IN WITNESS WHEREOF, I HAVE HERETO SET MY HAND AND SEAL THIS 28 DAY OF Sept. 1981.
Mary M. Butler
NOTARY PUBLIC, STATE OF FLORIDA
MY COMMISSION EXPIRES: 8-7-83

PREPARED BY:
PANHANDLE ASSOCIATES INC.
P.O. BOX 3157 FT. WALTON BEACH, FLORIDA 32548