

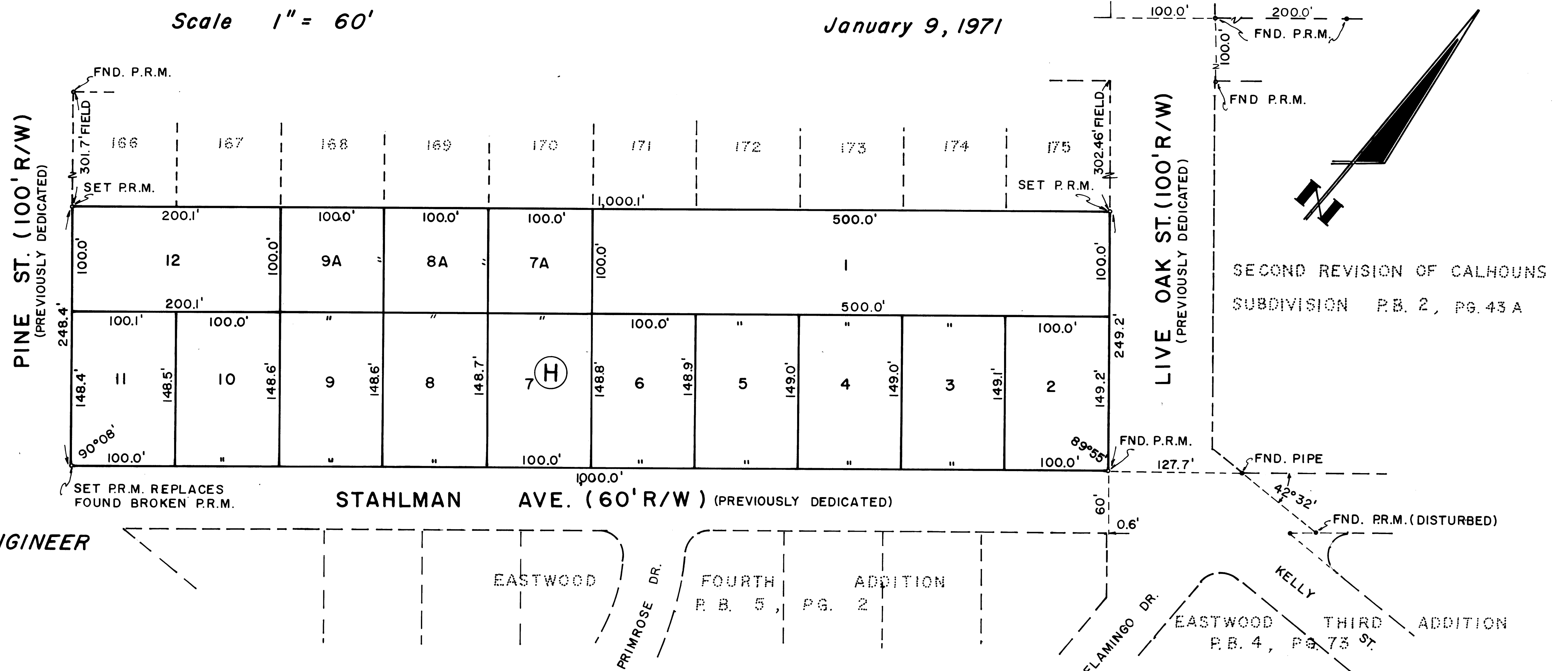
EASTWOOD FIFTH ADDITION

TO DESTIN, OKALOOSA COUNTY, FLORIDA.

BEING A RESUBDIVISION OF A PORTION OF BLOCK D, REVISION OF CALHOUNS SUBDIVISION

Scale 1" = 60'

January 9, 1971



SECOND REVISION OF CALHOUNS
SUBDIVISION P.B. 2, PG. 43A

SECOND REVISION OF CALHOUNS
SUBDIVISION P.B. 2, PG. 43A

PREPARED BY:
W. E. OVERSTREET, CONSULTING ENGINEER
FORT WALTON BEACH, FLORIDA.

DEDICATION

KNOW ALL MEN BY THESE PRESENTS THAT WALTER F. WINTON JR. AND WIFE BETTY L. WINTON DO HEREBY CERTIFY THAT THEY ARE THE OWNERS OF THE PROPERTY DESCRIBED HEREON, THAT THE SUBDIVISION OF THE SAME AS SHOWN HEREON IS THEIR FREE AND VOLUNTARY ACT, AND THAT ALL STREETS AND ROADS ARE HEREBY DEDICATED TO THE USE OF THE PUBLIC, IN FEE SIMPLE.
SIGNED, SEALED AND DELIVERED
IN THE PRESENCE OF:

Marguerite L. Sandstrom
WITNESS
Clyde A. Farley
WITNESS

Walter F. Winton Jr.
WALTER F. WINTON JR.
Betty L. Winton
BETTY L. WINTON

ACKNOWLEDGEMENT

STATE OF FLORIDA, COUNTY OF PINELLAS.
BEFORE THE SUBSCRIBER PERSONALLY APPEARED WALTER F. WINTON JR. AND WIFE BETTY L. WINTON, KNOWN TO ME TO BE THE INDIVIDUALS DESCRIBED IN AND WHO EXECUTED THE DEDICATION, AND ACKNOWLEDGED THEY EXECUTED THE SAME FOR THE USES AND PURPOSES HEREIN SET FORTH.

Clyde A. Farley
PUBLIC STATE OF FLORIDA
COMMISSION EXPIRES: Aug 14, 1974

APPROVAL OF COUNTY COMMISSIONERS

THIS CERTIFIES THAT THIS PLAT WAS PRESENTED TO THE BOARD OF COUNTY COMMISSIONERS OF OKALOOSA COUNTY, FLORIDA AND APPROVED BY THEM FOR RECORD ON THE 9 DAY OF FEB, 1971.

Sam Merrill CHAIRMAN
Leon B. Thomas MEMBER
Alan Williams MEMBER
Bob Patton MEMBER
Bob E. Eshel MEMBER

COUNTY CLERK'S CERTIFICATE

I, CECIL L. ANCHORS, CLERK OF THE CIRCUIT COURT OF OKALOOSA COUNTY, FLORIDA HEREBY CERTIFY THAT THIS PLAT COMPLIES WITH ALL THE REQUIREMENTS OF THE PLAT ACT (CHAPTER 177 OF THE STATUTES OF THE STATE OF FLORIDA) AND THE SAME WAS FILED FOR RECORD ON THE 9 DAY OF FEB, 1971 AND INDEXED IN PLAT BOOK 5 AT PAGE 8 OF SAID COUNTY.

Cecil L. Anchors
CLERK OF THE CIRCUIT COURT
OKALOOSA COUNTY, FLORIDA.

SURVEYOR'S CERTIFICATE

I, W. E. OVERSTREET, HEREBY CERTIFY THAT THIS PLAT IS A CORRECT REPRESENTATION OF THE LAND DESCRIBED HEREIN, THAT SAID LAND HAS BEEN SUBDIVIDED AND STAKED AS INDICATED. THAT PERMANENT REFERENCE MONUMENTS (P.R.M.) HAVE BEEN PLACED AS REQUIRED BY THE PLAT ACT (CHAPTER 177 OF THE FLORIDA STATUTES)

W. E. Overstreet
FLORIDA REGISTERED LAND SURVEYOR

DESCRIPTION

THAT PART OF BLOCK D "SECOND REVISION OF CALHOUNS SUBDIVISION OF ADDITION TO TOWN OF DESTIN FLORIDA OKALOOSA COUNTY" AS RECORDED IN PLAT BOOK 2, AT PAGE 43A, PUBLIC RECORDS OF OKALOOSA COUNTY, FLORIDA, LYING BETWEEN PINE ST. AND LIVE OAK ST., AND STAHLMAN AVE. AND LOTS 166 THRU 175 OF SAID BLOCK D.

NOTES

— DENOTES PERMANENT REFERENCE MONUMENTS (P.R.M.).
THE SIGN (°) MEANS DEGREES AND THE SIGN (') MEANS FEET OR MINUTES.
ALL LOT CORNERS ARE STAKED WITH IRON PINS.

EASTWOOD FIFTH ADDITION
PLAT BOOK 5, PAGE 8